

Wall mounting alarm annunciator system

Flexible Alarm System supplied ready to mount on site

- **Modular construction from 1 to 256 alarm channels**
- **Complete alarm system with all required terminals, audibles, power supplies and pushbuttons**
- **Choice of different Annunciators**
- **Choice of enclosure material**
- **Ready for immediate installation on site**
- **Available with different power supply arrangements**



The Wall Mounting Annunciator range is supplied as a finished Alarm System ready to mount onto a wall or vertical structure. The system is a fully operational Annunciator System complete with MCB, Power Supply, audible, control pushbuttons and terminals.

All alarm ways are wired to terminals ready for direct connection on site through the bottom mounted un-drilled gland plate. All that is required is the connection of the supply voltage and the alarm contacts.

The System can be supplied with a choice of different Annunciators depending on the application requirements. The Annunciator can include a Power Supply, DC/DC Converter or battery backed standby supply.



Powering Business Worldwide

Eaton Electric Limited,
Great Marlings, Butterfield, Luton
Beds, LU2 8DL, UK.
Tel: + 44 (0)1582 723633 Fax: + 44 (0)1582 422283
E-mail: mtlenquiry@eaton.com
www.mtl-inst.com

© 2017 Eaton
All Rights Reserved
Publication No. EPS RTK 725WM Rev 2
January 2017

TECHNICAL SPECIFICATION

Annunciator

Systems can be provided fitted with the 725B, Range 725, UC625 or SIL725 Alarm Annunciator. Please see separate datasheets on these products for full technical specification.

Enclosures

The Annunciator can be supplied in the following enclosures, sized to suit the Annunciator being fitted:

- Stainless steel (304 or 316)
 - Mild steel coated in epoxy polyester in light grey (RAL7035)
 - Glass reinforced Polyester (GRP)
- Hinges are always fitted on the left unless requested otherwise

Wall Mounting

The wall mounting boxes are all equipped with a means of mounting directly onto a wall or frame. Depending on the size and weight of the box this will be through internal mounting holes or external mounting brackets. Lifting keys are included on larger enclosures.

Terminals

All Annunciator inputs and outputs are wired to Weidmuller W Series terminals ready for direct connection by the customer.

Cables

All wiring from the Annunciator to the terminals is supplied in tri-rated 0.75mm² cable through open slot trunking and fitted with insulated bootlace ferrules.

Alternative cable to suit local markets or special conditions can be supplied upon request.

Cable entries

All incoming connections would normally be made through the un-drilled gland plate positioned on the bottom of the enclosure.

Power Supplies

The Wall Mounting Annunciator can be supplied from 24VDC or supplied complete with suitable PSU or DC/DC Converter to convert from alternative supply voltages. These include:

- 85 to 264VAC
- 36-72VDC
- 72-144VDC
- 120-370VDC

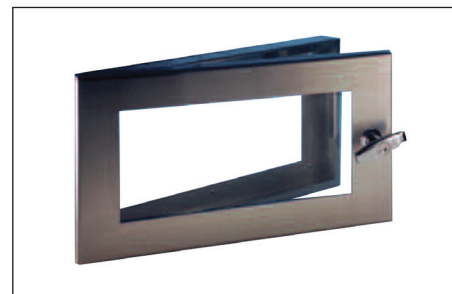
An integral MCB is also fitted to protect the PSU and also allows maintenance technicians to switch off power to the system.

Battery backup

The above power supply arrangement can be extended to include a battery backed system. This uses the P673 components that provide a backup of a defined number of alarms for a defined period using sealed lead-acid batteries.

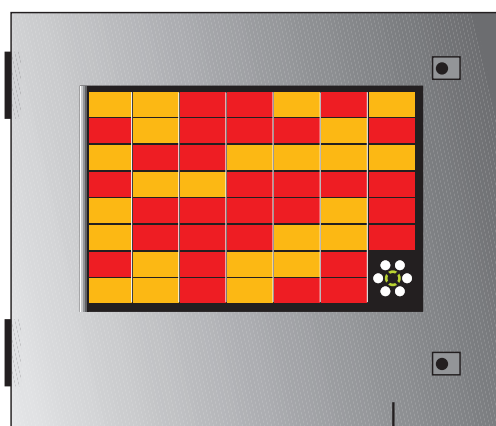
Environmental Protection

The standard protection of the box is IP55 but the front of the Annunciator itself is sealed to IP41. Alternative arrangements can be provided to give a IP54 or IP65 protection of the whole assembly.



Testing

All systems are supplied pre-tested for immediate installation on site. This includes full earth bonding and high voltage insulation resistance testing.



Cable entry through undrilled gland plate.