

Pole Mount Bracket PMB for ExCam DEX5000i

Datasheet.

Features.

Compatible

with all WMB Wall Mount Brackets.

For pole diameters of 100 mm to 150 mm.

Data.

Mechanical Characteristics

Material: Stainless steel AISI 316L/1.4404

Weight: 6.0 kg

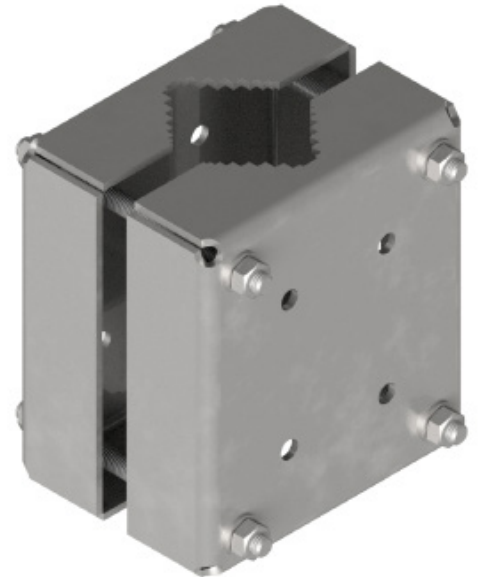
Dimensions: WxHxD 236x230x210(max.)

Point load: 50 kg

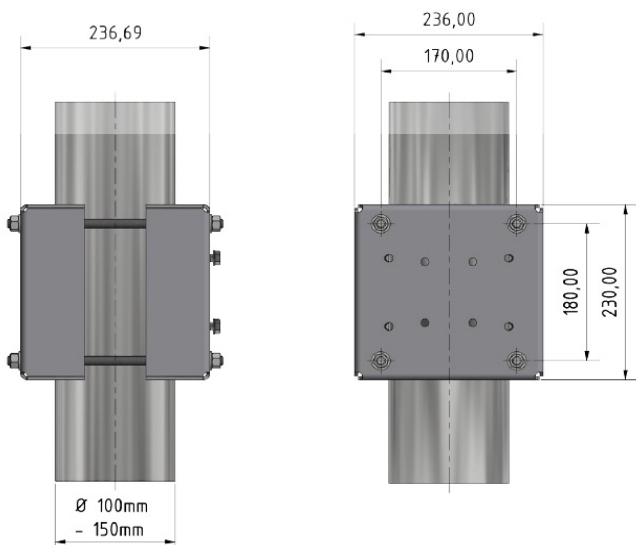
Scope of Delivery

included

- 4 thread rods M12x260
- 4 screws M10x25
- 8 screw nut M12
- 8 flat washer M12
- 8 flat washer M10
- Installation manual
- 4 screw nut M10



Dimensions [mm].



Dexter System Solutions B.V.
Bakkenzuigerstraat 40
1333 HA Almere
Netherlands
info@dexter.eu
T: +31 36 5368216

* Illustrations show models with accessories that are subjected to an extra charge.

Dexter System Solutions B.V. all rights and technical changes reserved. No liability for wrong or missing data.